

JAMEC PEM

HEAVY-DUTY RETRACTABLE STEEL HOSE REEL

PREMIUM QUALITY 3/8"
EXTREME ULTRAFLEX HOSE



OPERATING INSTRUCTIONS

PRODUCT NO.

58.6034 - 15 metre x 9.2 mm (3/8") Extreme Ultraflex Reinforced Hose

HEAVY-DUTY RETRACTABLE STEEL HOSE REEL

PREMIUM QUALITY 3/8" EXTREME ULTRAFLEX HOSE

Extreme Ultraflex Reinforced Hose is a special blend of hose that has been developed for today's demanding conditions, it stay flexible in the cold and doesn't kink in the heat, allowing full flow in all-weather conditions. It's a tough hose for tough conditions.

FEATURES

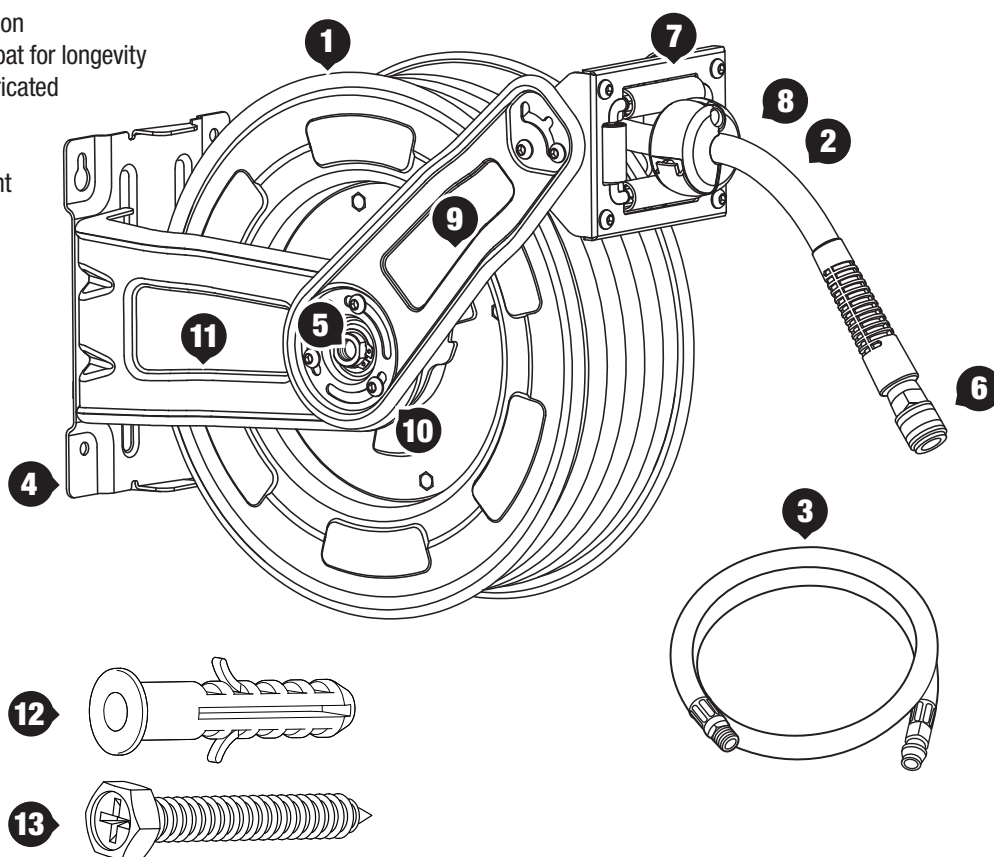
- Ceiling or wall mountable
- Heavy duty steel frame for robust application
- Finished in a corrosion resistant powder coat for longevity
- Long-lasting spring fully enclosed and lubricated
- Durable double arm structure
- Four direction hose rollers
- Easy hose outlet direction angle adjustment
- No tools required, adjustable hose stop
- Easy lift off mounting bracket

PACKAGE CONTENTS

1. Retractable hose reel
2. Air hose with Nitto equivalent 250 Series coupling (15 m)
3. Leader hose with Nitto equivalent 250 Series adaptor (1.5 m)
4. Bottom base plate
5. Air inlet
6. Air outlet
7. Hose guide
8. Stopper
9. 2 x Roller bracket arms
10. 6 x Screws
11. 2 x Reel bracket

HARDWARE CONTENTS (NOT INCLUDED)

12. 4 x Plastic anchor
13. 4 x ST6.3 x 45 mm Lag bolt



SPECIFICATIONS

Part no.	58.6034
Hose length	15 m
Hose I.D	9.2 mm (3/8")
Hose O.D	15.2 mm (5/8")
Leader hose length	1.5 m
Hose material	Extreme Ultraflex Reinforced Hose
Reel / case type	Heavy-duty retractable / steel
Auto lock / rewind	Yes
Max. working pressure	300 psi
Fitting size	Hose: 1/4" BSP Nitto equivalent 250 Series coupling with protective sleeve on outer end Leader Hose: 1/4" BSP Nitto equivalent 250 Series adaptor and 1/4" BSP male fitting on opposite end
Bracket	Fixed 4 bolt heavy duty steel mounting plate
Adjustable	Flexible positioning of guide arm for mounting on bench, ceiling or wall
Advised application	Air / water

JAMEC PEM

SAFETY

Read and understand this instruction manual before attempting to assemble, operate or install the Retractable Hybrid Hose Reel.

- **Incorrect assembly and/or operation of this product may result in serious injury or damage. Read and understand all assembly and operation instructions.**
- **Never remove side cover while hose is under tension. Serious injury may occur.**
- **Do not exceed maximum pressure of 300 psi. Use compressed air regulated to a maximum pressure at or below the rated pressure of any attachments to this hose reel.**
- **Protect your eyes by wearing safety glasses or a face shield when mounting and operating this hose reel.**
- **Keep loose clothing, hair, and jewellery away from moving parts.**
- **Make sure that the hose reel is firmly mounted before pressurising.**
- **The rapidly retracting hose may cause injury and/or property damage. Maintain control of the hose as it retracts.**
- **Keep hose away from sharp edges. Check hose for wear before each use.**

PREPARATION

Before assembling the hose reel, ensure all parts are included. Compare parts with the package contents list and hardware contents list. If any part is missing or damaged, do not attempt to assemble.

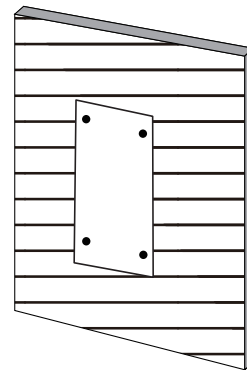
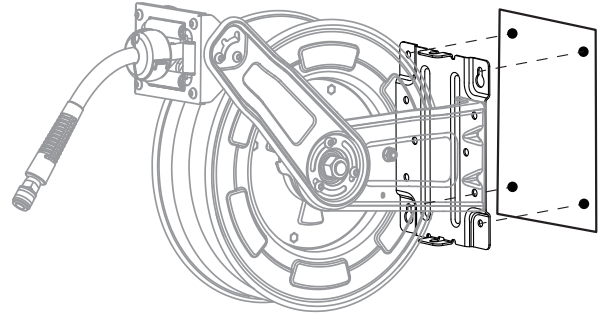
Estimated assembly time: 10 – 15 minutes.

Tools required for assembly and installation (not included):

- 10 mm (3/8") wrench
- Phillips screwdriver
- 5 mm (3/16") Allen wrench
- Sealant tape
- Drill with 3/8" drill bit
- Pencil
- Level

ASSEMBLY

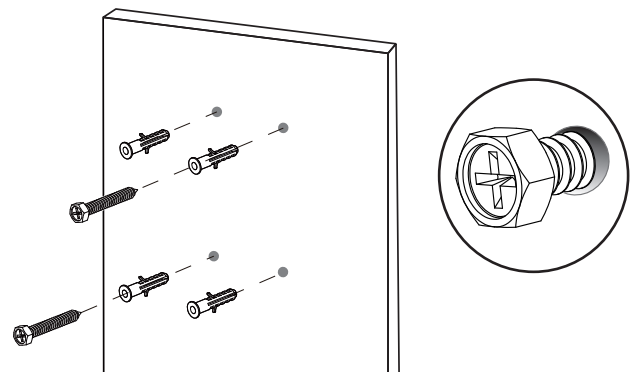
1. Use a piece of paper to make a template of the bottom base plate **4** of the hose reel. Mark the centre of bolt holes in the desired mounting location by putting the paper template against the wall.



NOTE: When securing the hose reel assembly to plywood or dimensional wood, make sure the wood is thick enough to not only support the hose reel, but also the force required to extend and retract the air hose.

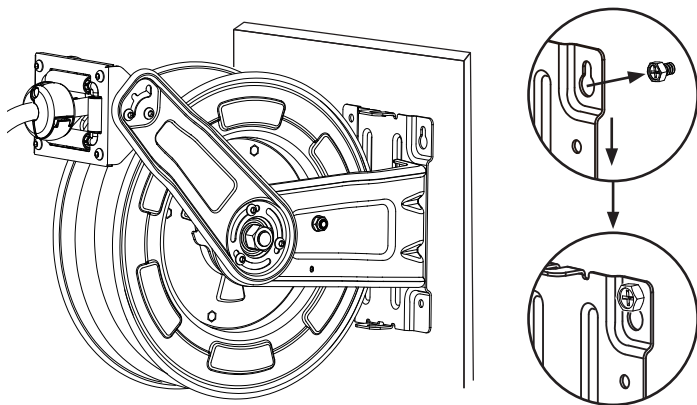
ENSURE THERE ARE NO LIVE ELECTRICAL WIRES OR PLUMBING IN THE WALL AT THE LOCATION YOU ARE DRILLING.

2. Drill 4 x holes to accommodate 3/8" bolts **13** (not included), and install 4 x plastic anchor **12** into the holes. Then drive 2 x mounting screws into the holes (lower left and upper right), leaving approximately 5 mm (1/4") between the wall and screw head.

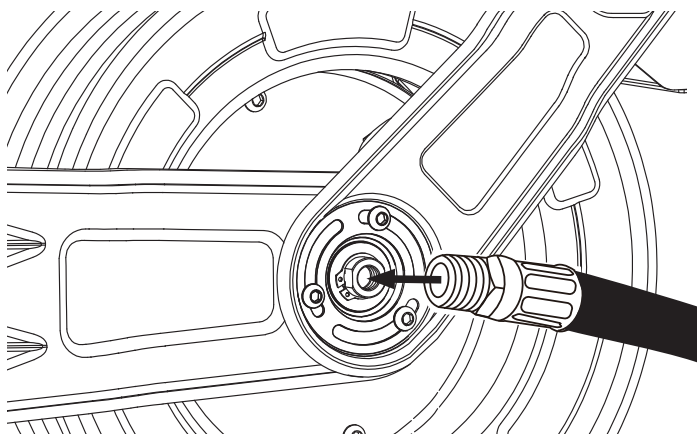


ASSEMBLY (CONT.)

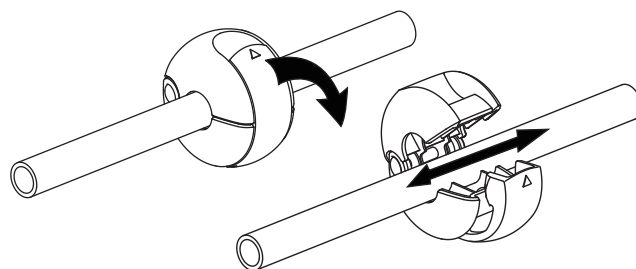
3. Place the hose reel bottom base plate **4** on the 2 x screws and slide the hose reel down, letting the screws move into the small end of the holes. This will hold the hose reel in place. Tighten the two screws and screw in the remaining screws to secure the hose reel.



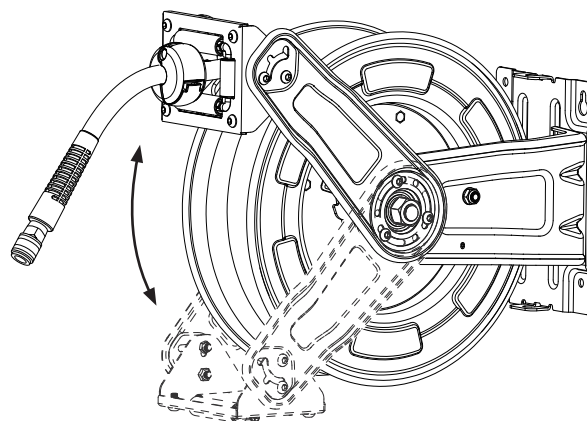
4. Wrap 3 – 5 layers of sealant tape on both male plug ends of the leader hose **3**. Attach one end of the leader hose into the air inlet **5** using a 10 mm (3/8") wrench to tighten.



5. Pull out the hose to the desired length, ensuring the hose reel is locked (will not rewind). Open the latch on the stopper **8** and move it to the desired location. Re-latch the stopper to set the maximum hose retraction length.



6. The roller bracket **9** can be adjusted to the best angle/position for the smoothest operation of the hose reel when mounted. Loosen the 3 x screws **10** on each side with a 5 mm (5/16") Allen wrench, rotate the roller bracket **9** to the desired position, then re-tighten the three screws **10** on each side tightly.



NOTE: If the desired angle is larger than 90 degrees, remove the 3 x screws **10** on each side and rotate the roller bracket **9** to the desired position. Replace the 3 x screws into the roller bracket and re-tighten.

OPERATION

1. To extend the hose, slowly pull out the hose to the required length. The hose reel will make a 'clicking' sound as the hose is pulled out. The clicking sound is the drum locking into place so it will not retract when you let go of the hose. To lock the hose in place, allow the hose to retract slowly after hearing a 'click'. It may be necessary to pull the hose beyond the required length to keep it from automatically retracting.
2. To retract the hose, slowly pull the hose until the 'clicking' stops. While holding the air hose, allow the hose automatically retract while guiding it back into the hose reel. The hose will continue to retract until the stopper ❸ stops against the hose guide ❷.

NOTE: TO AVOID INJURY AND DAMAGE, ALWAYS HOLD THE HOSE WHILE IT IS RETRACTING.

IMPORTANT

If the hose becomes tangled and will not retract, slowly pull out the hose past the tangled section and then allow the hose to slowly retract while guiding the hose back into the hose reel.

Always ensure the hose is clean and not twisted.

MAINTENANCE

- Always keep the hose clean.
- If the hose becomes dirty, clean it with a damp cloth while retracting.
- **DO NOT** twist the hose while in use.
- Mount the hose reel in a sheltered area to assist and protect the performance of the hose and hose reel.
- **DO NOT** allow the hose to contact any corrosive chemicals or fluids.
- Disconnect tool prior to retraction.
- Always retract the hose when not in use.
- **DO NOT attempt to open the inner drum assembly.**

WARRANTY & CLAIM PROCEDURE

The Jamec Pem Heavy-Duty Retractable Steel Hose Reel is covered against defects in material and workmanship for a period of 1 year from the purchase date recorded on the owner's invoice or receipt.

In the instance of a warranty claim, the owner will be entitled to a replacement unit or a sufficient repair of the defective part/s and or component/s to ensure normal operating condition of the hose reel.

WARRANTY EXCLUSIONS

The hose, rubber o-rings and hose stopper are deemed normal wear items and are not covered under warranty.

The warranty does not extend to parts or components affected or damaged by accident, normal wear, misuse, neglect or faulty installation.

To register a warranty claim visit jamecpem.com

TROUBLESHOOTING

PROBLEM	POSSIBLE CAUSE	CORRECTIVE ACTION
Hose cannot be extended smoothly or stops	Roller bracket is not adjusted to the ideal angle/position	Adjust roller bracket to the ideal angle/position
	Roller bracket is damaged	Replace roller bracket
Hose will not retract smoothly	Roller bracket is not adjusted to the ideal angle/position	Adjust roller bracket to the ideal angle/position
	Roller bracket is damaged	Replace roller bracket
Hose will not retract completely.	Not enough tension on the coil spring	<ol style="list-style-type: none">1. Pull out approximately six feet of hose and lock in place2. Remove the stopper from the hose and slide the hose out of the hose guide, so the hose is hanging loose<ol style="list-style-type: none">a. To increase the tension, wrap the loose hose once around the reel drumb. To decrease the tension, unwrap the hose once from the reel drum3. Slide the hose back through the hose guide and reattach the hose stopper4. Extend the hose out several feet to check the tension

NOTES

[illegible]

NOTES

[illegible]

JAMEC PEM

Distributed by **TRADEPEM INDUSTRIAL PTY LTD.**

jamecpem.com